

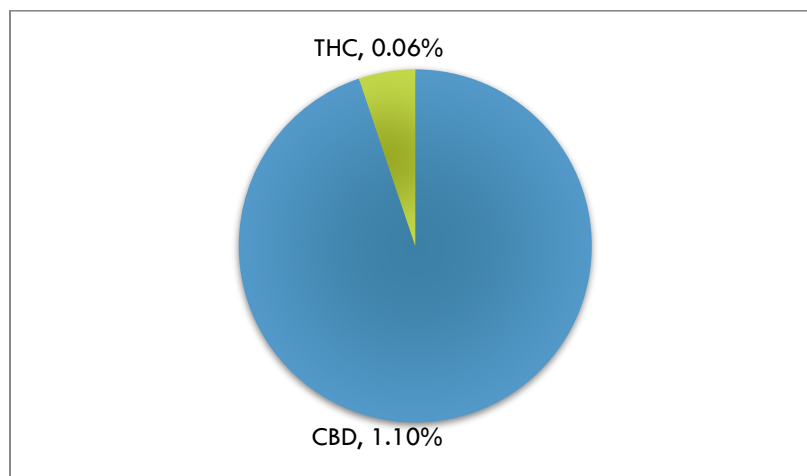


POTENCY REPORT

Material Tested: Whole Pet Tincture 300mg
Testing Method: UPLC-DAD
Date Tested: 04/17/2018
Batch Number: A0314805
Testing Analyst: Ben Dennis; Reviewed by: Jeremy Riggle PhD
Total Product Mass: 30mL

ACIDIC COMPOUND mg/unit		NEUTRAL COMPOUND mg/unit	
CBDA	<0.1%	CBD	1.10%
THCA	<0.1%	THC	<0.1%
CBCA	<0.1%	CBC	<0.1%
CBGA	<0.1%	CBG	<0.1%
CBNA	<0.1%	CBN	<0.1%
THCVA	<0.1%	THCV	<0.1%
CBDVA	<0.1%	CBDV	<0.1%

Cannabinoid Content (wt/wt)



Mary's Nutritionals, LLC is a wholly owned subsidiary of Mary's Medicinals, LLC. Information provided in this report is for CBD rich hemp cultivated by Elite Botanicals, Loveland CO.



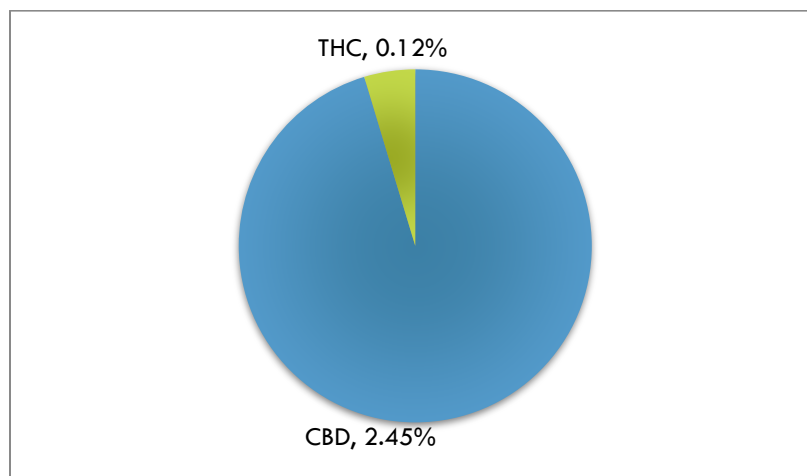


POTENCY REPORT

Material Tested: Whole Pet Tincture 600mg
Testing Method: UPLC-DAD
Date Tested: 04/17/2018
Batch Number: A0222801
Testing Analyst: Ben Dennis; Reviewed by: Jeremy Riggle PhD
Total Product Mass: 30mL

ACIDIC COMPOUND mg/unit		NEUTRAL COMPOUND mg/unit	
CBDA	<0.1%	CBD	2.45%
THCA	<0.1%	THC	0.12%
CBCA	<0.1%	CBC	<0.1%
CBGA	<0.1%	CBG	<0.1%
CBNA	<0.1%	CBN	<0.1%
THCVA	<0.1%	THCV	<0.1%
CBDVA	<0.1%	CBDV	<0.1%

Cannabinoid Content (wt/wt)










Mary's Nutritionals, LLC is a wholly owned subsidiary of Mary's Medicinals, LLC. Information provided in this report is for CBD rich hemp cultivated by Elite Botanicals, Loveland CO.



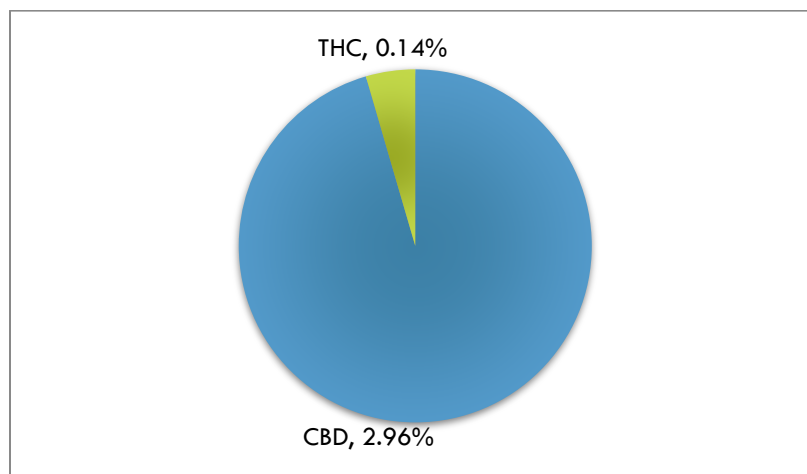


POTENCY REPORT

Material Tested: Whole Pet Tincture 900mg
Testing Method: UPLC-DAD
Date Tested: 04/17/2018
Batch Number: A0314804
Testing Analyst: Ben Dennis; Reviewed by: Jeremy Riggle PhD
Total Product Mass: 30mL

ACIDIC COMPOUND mg/unit		NEUTRAL COMPOUND mg/unit	
CBDA	<0.1%	CBD	2.96% 
THCA	<0.1%	THC	0.14% 
CBCA	<0.1%	CBC	<0.1% 
CBGA	<0.1%	CBG	<0.1% 
CBNA	<0.1%	CBN	<0.1% 
THCVA	<0.1%	THCV	<0.1% 
CBDVA	<0.1%	CBDV	<0.1% 

Cannabinoid Content (wt/wt)



Mary's Nutritionals, LLC is a wholly owned subsidiary of Mary's Medicinals, LLC. Information provided in this report is for CBD rich hemp cultivated by Elite Botanicals, Loveland CO.



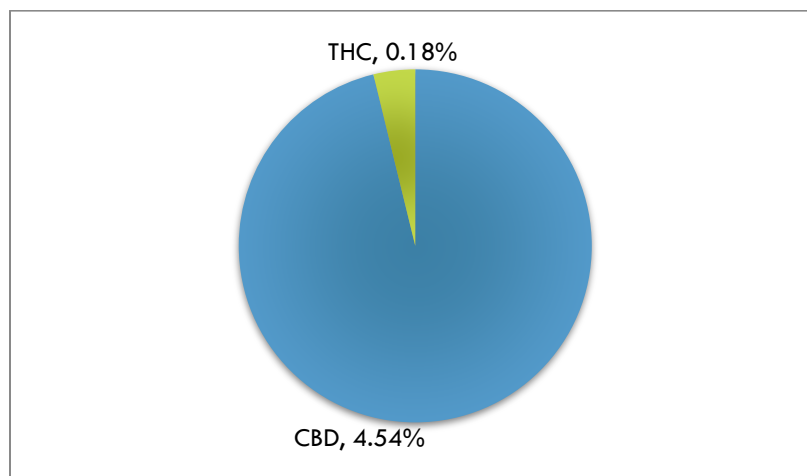


POTENCY REPORT

Material Tested: Whole Pet Tincture 1200mg
Testing Method: UPLC-DAD
Date Tested: 04/17/2018
Batch Number: A0222802
Testing Analyst: Ben Dennis; Reviewed by: Jeremy Riggle PhD
Total Product Mass: 30mL

ACIDIC COMPOUND mg/unit		NEUTRAL COMPOUND mg/unit	
CBDA	<0.1%	CBD	4.54%
THCA	<0.1%	THC	0.18%
CBCA	<0.1%	CBC	<0.1%
CBGA	<0.1%	CBG	<0.1%
CBNA	<0.1%	CBN	<0.1%
THCVA	<0.1%	THCV	<0.1%
CBDVA	<0.1%	CBDV	<0.1%

Cannabinoid Content (wt/wt)










Mary's Nutritionals, LLC is a wholly owned subsidiary of Mary's Medicinals, LLC. Information provided in this report is for CBD rich hemp cultivated by Elite Botanicals, Loveland CO.



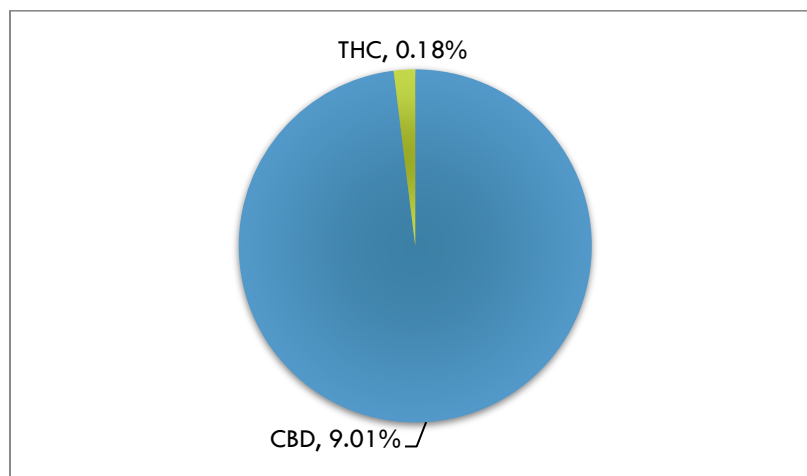


POTENCY REPORT

Material Tested: Whole Pet Tincture 2400mg
Testing Method: UPLC-DAD
Date Tested: 04/17/2018
Batch Number: A0222803
Testing Analyst: Ben Dennis; Reviewed by: Jeremy Riggle PhD
Total Product Mass: 30mL

ACIDIC COMPOUND mg/unit		NEUTRAL COMPOUND mg/unit	
CBDA	<0.1%	CBD	9.01% 
THCA	<0.1%	THC	0.18% 
CBCA	<0.1%	CBC	<0.1% 
CBGA	<0.1%	CBG	<0.1% 
CBNA	<0.1%	CBN	<0.1% 
THCVA	<0.1%	THCV	<0.1% 
CBDVA	<0.1%	CBDV	<0.1% 

Cannabinoid Content (wt/wt)



Mary's Nutritionals, LLC is a wholly owned subsidiary of Mary's Medicinals, LLC. Information provided in this report is for CBD rich hemp cultivated by Elite Botanicals, Loveland CO.

