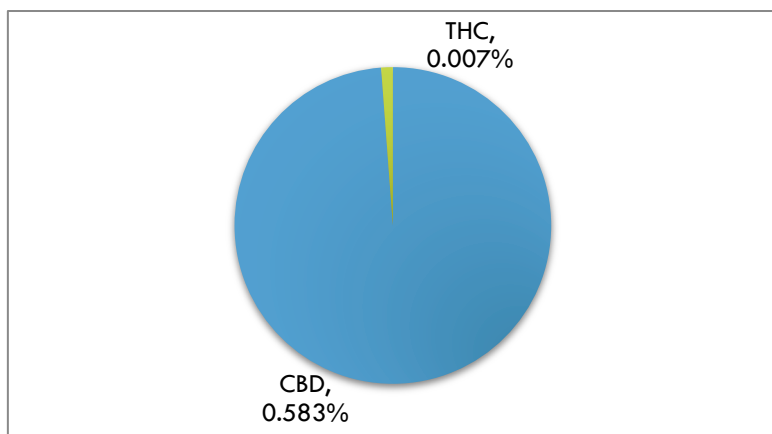


Material Tested: Pet Gel Pen  
 Testing Method: UPLC-DAD  
 Date Tested: 08/13/2018  
 Batch Number: H0810819  
 Testing Analyst: Benjamin Dennis Reviewed by Jeremy Riggle, PhD  
 Total Product Mass: 8.5g  
 Manufactured date: 08/10/2018

ACIDIC COMPOUND mg/unit		NEUTRAL COMPOUND mg/unit	
<b>CBDA</b>	<0.1%	<b>CBD</b>	0.583%
<b>THCA</b>	<0.1%	<b>THC</b>	<0.1%
<b>CBCA</b>	<0.1%	<b>CBC</b>	<0.1%
<b>CBGA</b>	<0.1%	<b>CBG</b>	<0.1%
<b>CBNA</b>	<0.1%	<b>CBN</b>	<0.1%
<b>THCVA</b>	<0.1%	<b>THCV</b>	<0.1%
<b>CBDVA</b>	<0.1%	<b>CBDV</b>	<0.1%

Cannabinoid Content (wt/wt)



Jeremy Riggle, PhD

Mary's Nutritionals, LLC is a wholly owned subsidiary of Mary's Medicinals, LLC. Information provided in this report is for CBD rich hemp cultivated by Elite Botanicals, Loveland CO.

